



COLLEAGUES IN
THE EVOLUTION OF

WE
CREATE
NEW
SPACE



Pharmacy
DESIGN

A HISTORY OF VISUAL MERCHANDISING

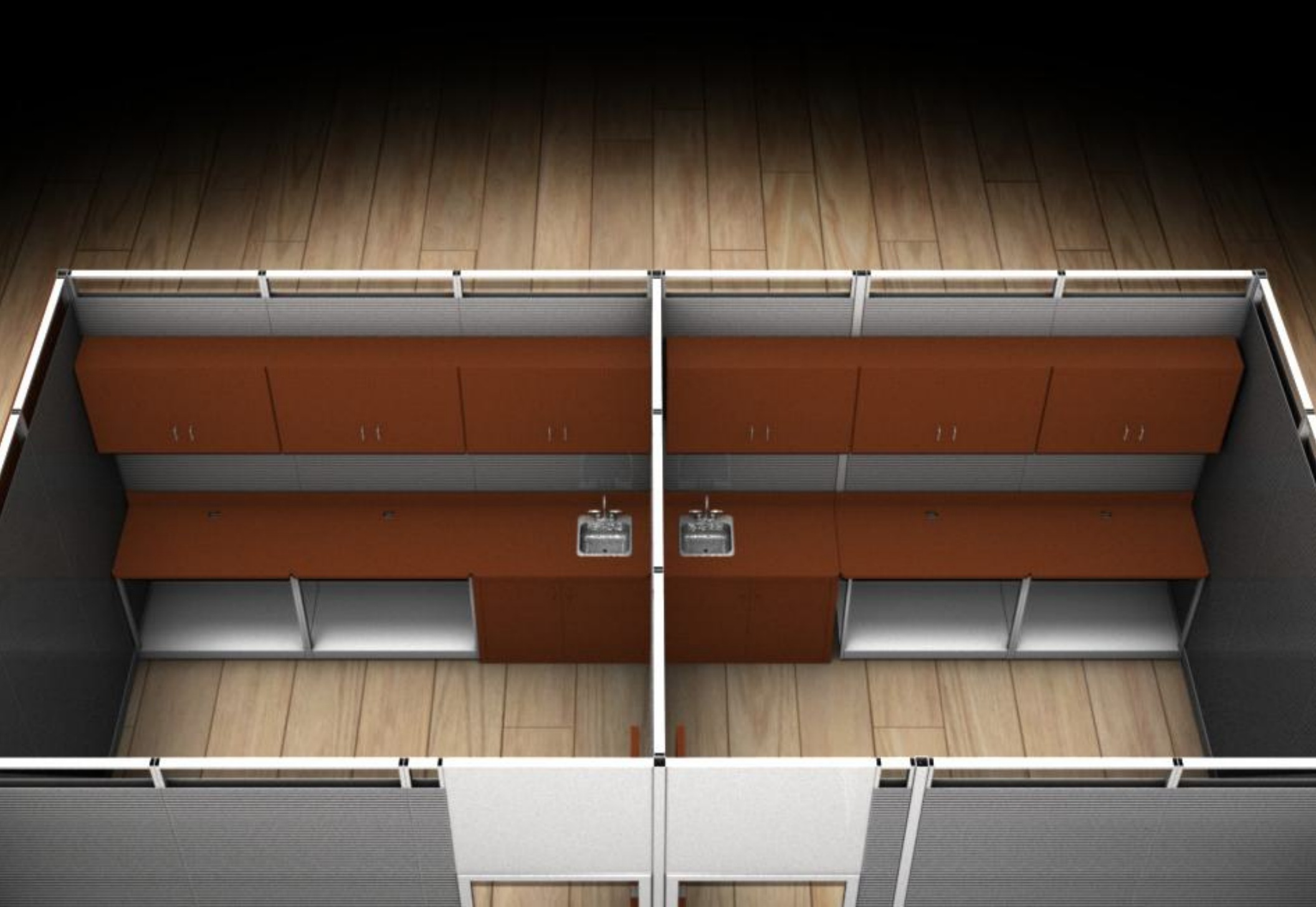
DURABILITY | STRENGTH | INCREASED PRODUCT IN SAME SPACE

In 1970, Karl Weber founded Uniweb to service the commercial sector's growing need for more space and versatility in display and visual merchandising. The practical solution was an innovative steel panel design that quickly revolutionized the merchandising industry.

Our expertise derives from partnering with other fixture manufacturers, designers and architects, store planners, and display personnel. Utilizing such a vast and experienced knowledge base enables us to create a line of products that fulfills the needs of our customers.



COMPLETE ROOM SOLUTIONS



4

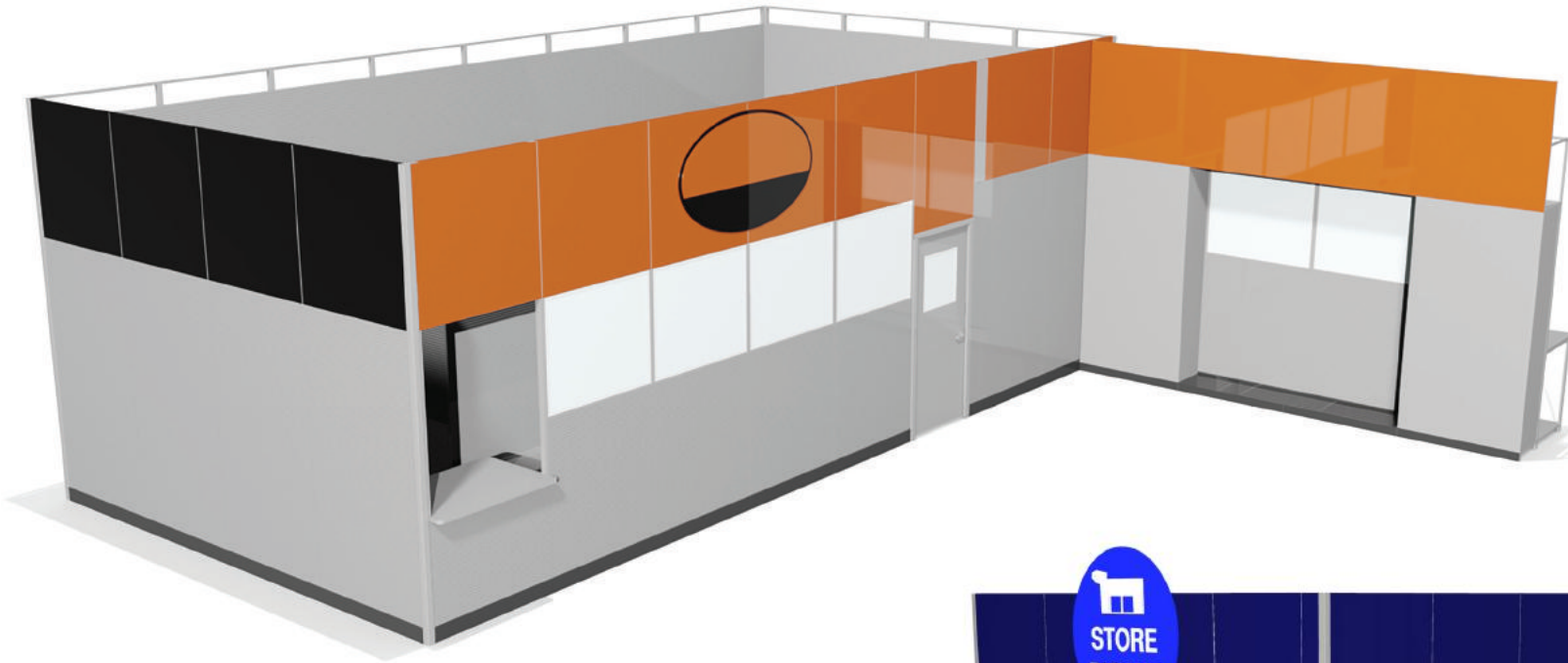
800.486.4932
WWW.UNIWEBINC.COM

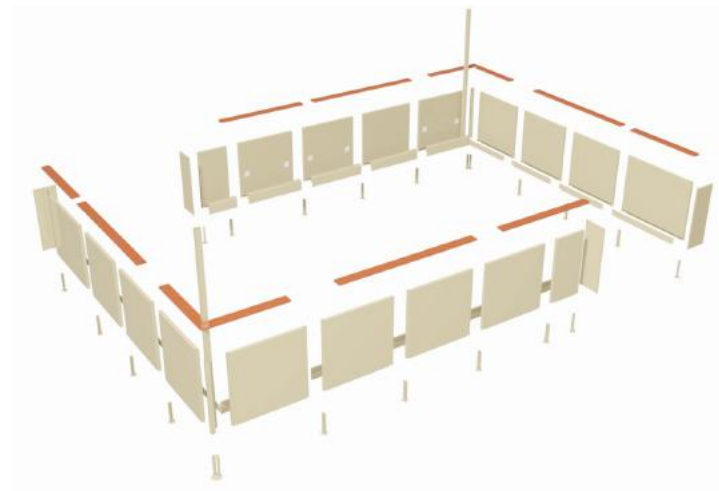
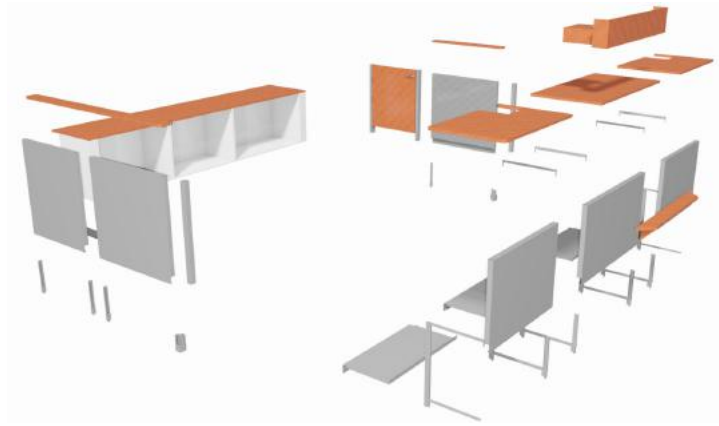


OUR MODULAR LINE'S NEWEST ADDITION: COMPLETE AND SECURE CONSULTATION ROOMS!

Dedicated private spaces for client consultations, inoculations and to process transactions. Rooms adapt to fit your current layout. These areas can be built to size, texture and color specifications, lock style choice, and with privacy glass door or solid surface door. Design and equip peripheral space needs for maximum utility at an affordable price! Other multi-functional retail uses include office management, cash rooms or other meeting needs where security and privacy are vital. Room sizes, style, and configurations are virtually unlimited!









FROM FLOOR TO CEILING ... FACTORY BUILT TO YOUR SPECIFICATIONS

8

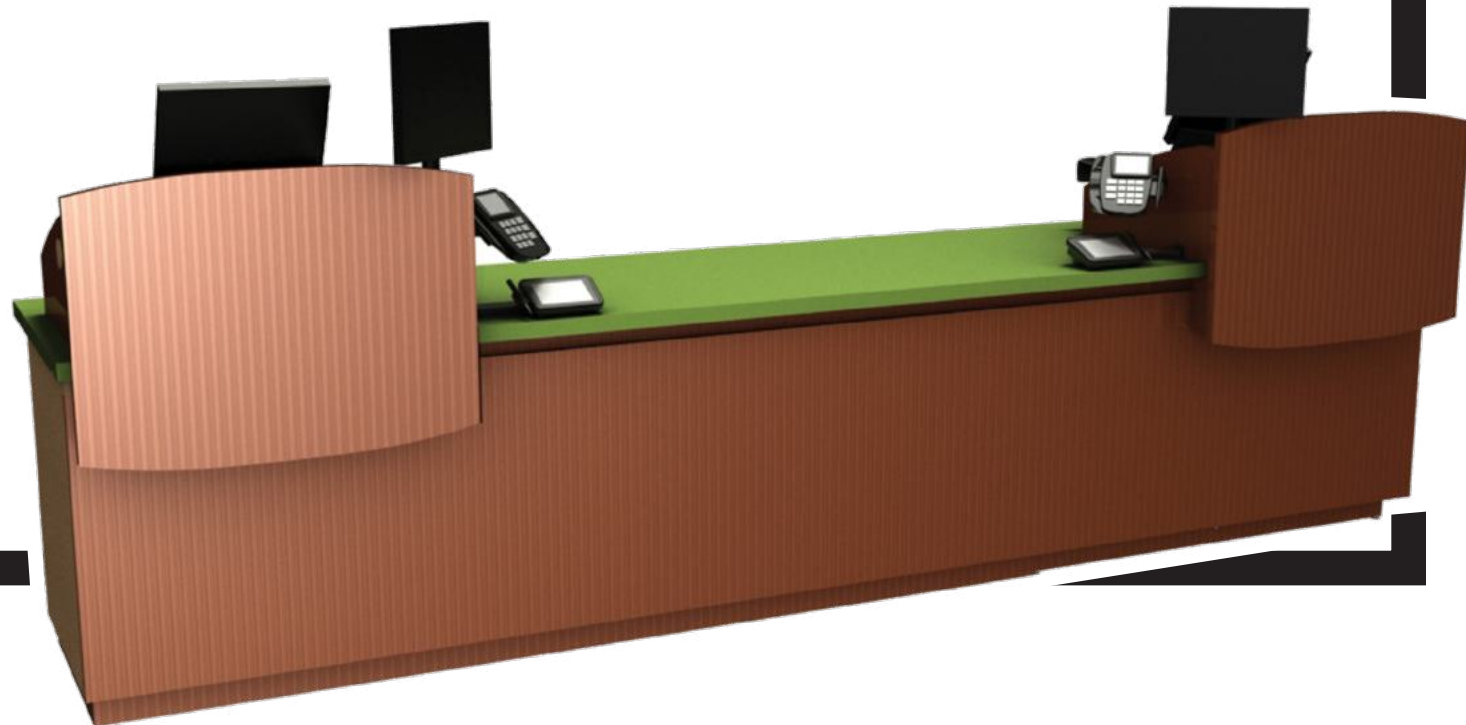
800.486.4932
WWW.UNIWEBINC.COM

UNLIMITED UNDER COUNTER CONFIGURATIONS





FLEX-COUNTERS - **MIX IT UP!**









SECURE STORAGE

CREATED IN **ALL** STYLES AND SIZES









CLEAN LINE OTC DISPLAYS





POP-OUT PRIVACY SCREEN

MADE TO YOUR SIZE AND PALATE SPECIFICATIONS

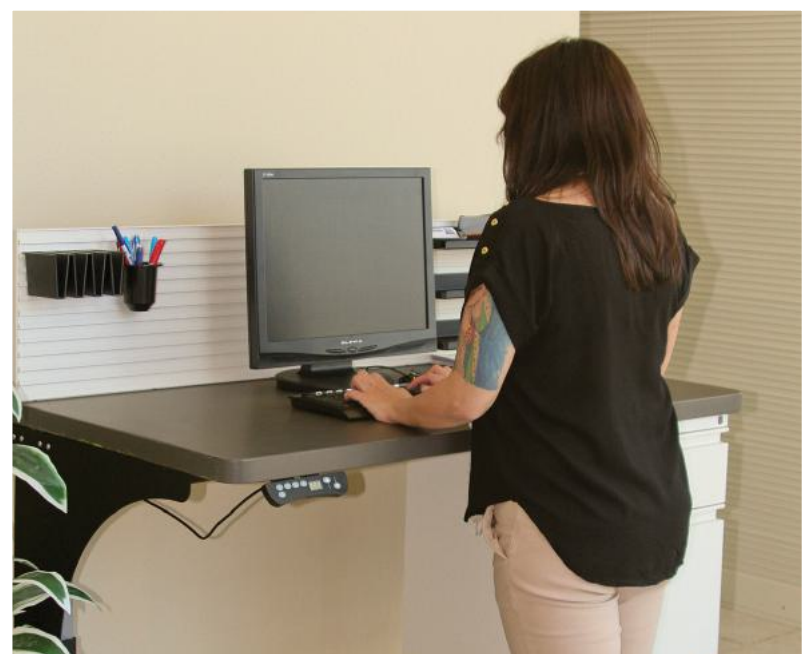




INCLUDES AN ADJUSTABLE HEIGHT DESK FOR FLEXIBLE CONVENIENCE...

Elevate Your Workflow, without Spilling your Coffee! Smooth powered transition from sitting to standing positions and everything in between with five preset height settings that adjusts from 28" to 42" at the touch of a button. Sleek furniture that hides bulky wires and connections. The backslash options have an extensive selection of workflow accessories available. Made to your color specification.

Go ahead. Push the button!



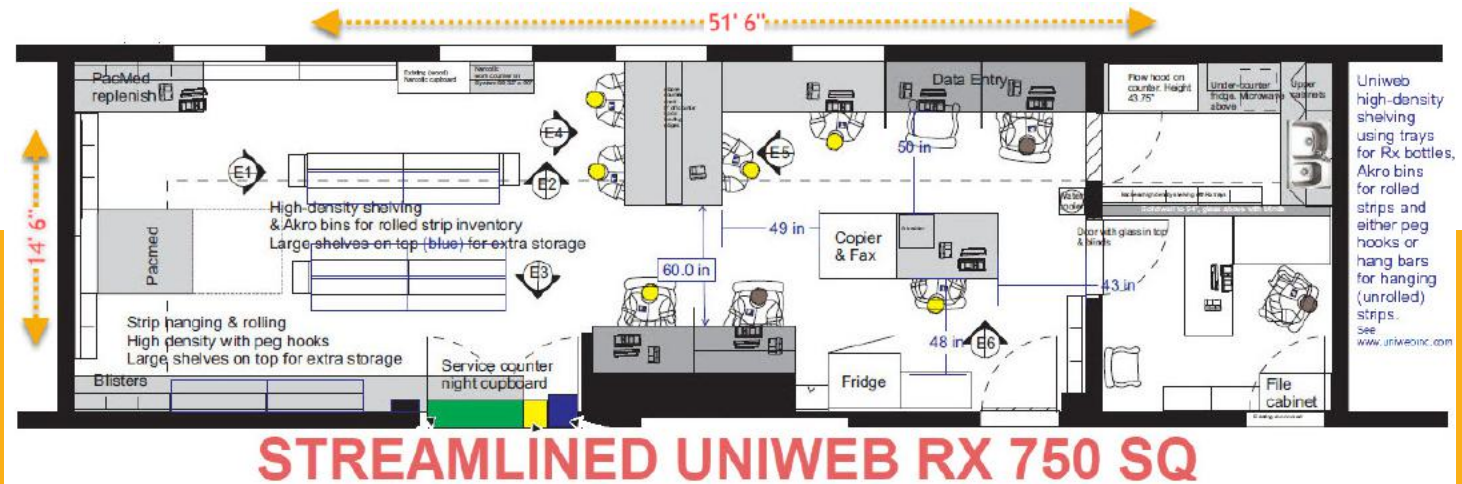
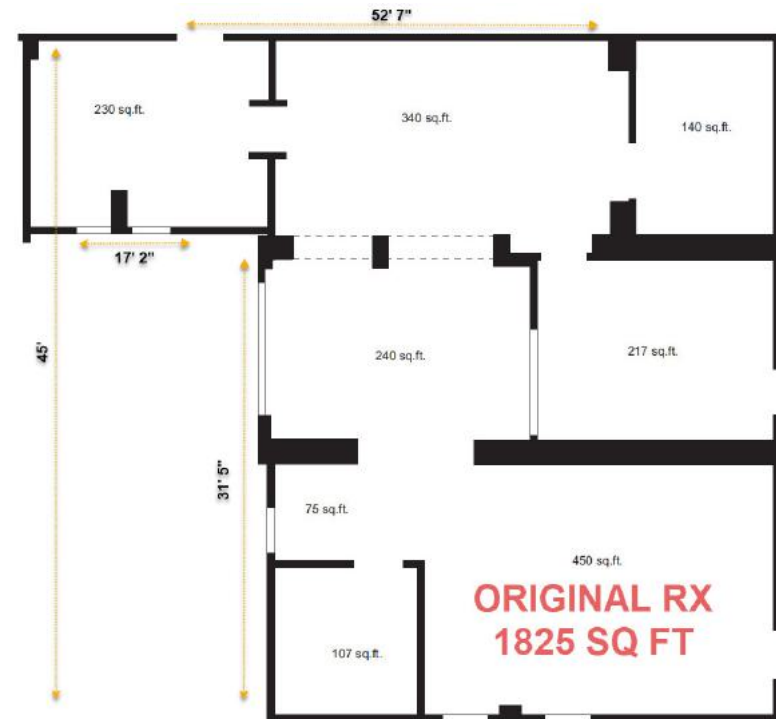
BEFORE & AFTER

THE CHALLENGE:

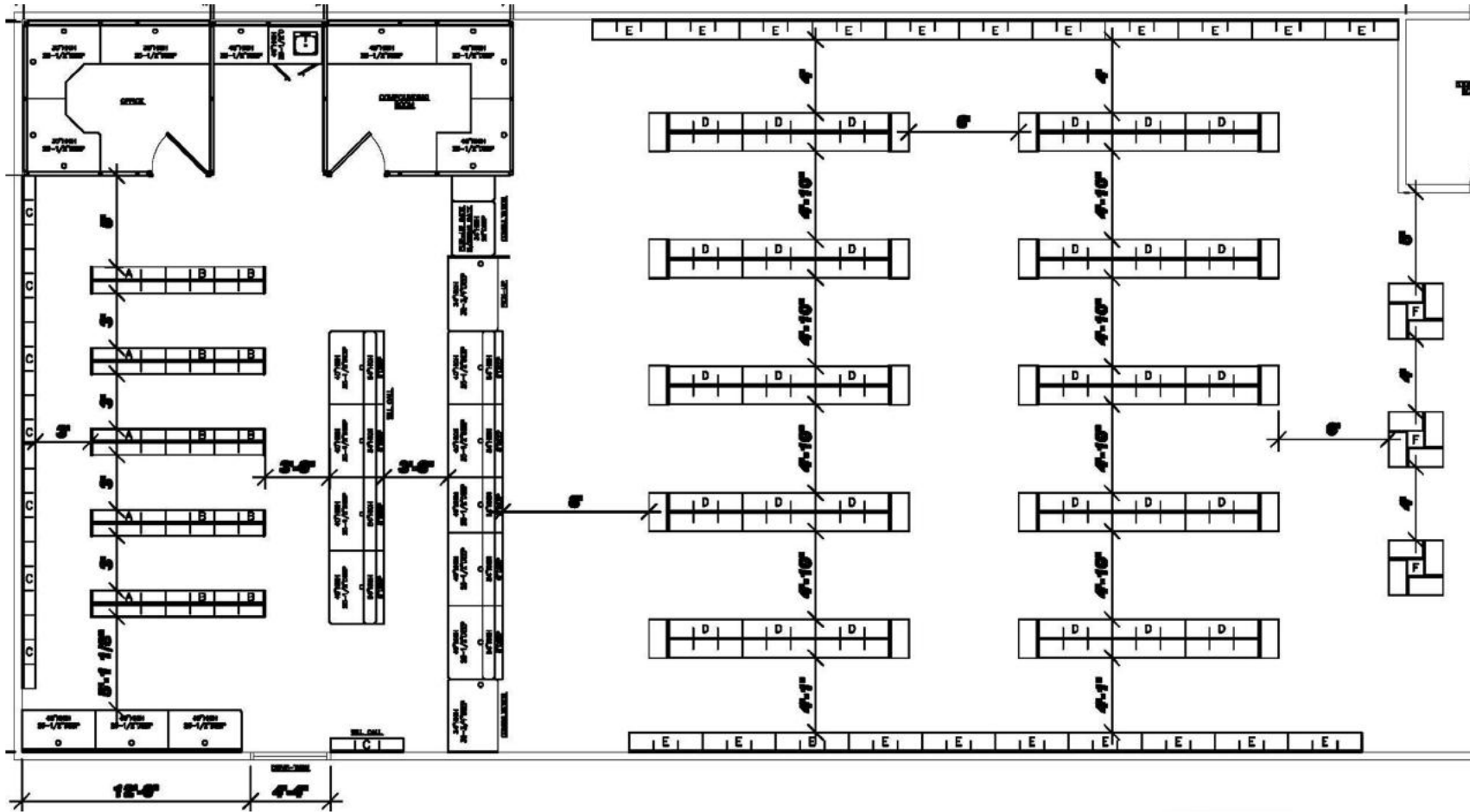
Relocate the current 1825 sq ft RX to a new 750 sq ft area (60% smaller than existing) while maintaining stock levels, staff, and workload.

THE RESULT:

Using Uniweb's high-density shelving and modular counters, with interchangeable under-counter accessories, the RX is up and running retaining the same staff, workload, and storage in only 40% of the original workspace!



WE CAN LAYOUT AN EFFICIENT, HIGH CAPACITY FOOT PRINT FOR YOU!



SLIDING WALL

DOUBLE, EVEN TRIPLE THE STORAGE OF YOUR WALL PANEL! OUR SYSTEM 88 WALL PANEL IS SECURED TO THE WALL, A TRACK IS LAID DOWN IN FRONT OF THE PANEL, THEN A SECOND COMPLETE PANEL OR BAY IS ASSEMBLED IN FRONT.



Uniweb Office Accessories



Binder Holder



Cascade File Holder



Stackable Holder



Letter Tray



Phone Shelf



Monitor Arm



Note Holder



Cascade Note Holder



Plastic Bin



Tack Strip



Marker Board



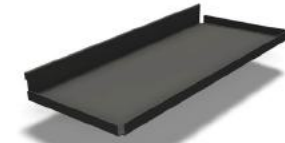
Script Box

Get Organized ... Stay Efficient

Ultimate Space Utilization at your Service



Thinline Shelf



RX Tray



Pencil Cup Holder



Basket Hook



Ball End Hook



DoubleTray



UNIWEB
We Create New Space



800.486.4932

www.uniwebinc.com

All Roads Lead to Uniweb



We Can
Take You
There...

UNIWEB PRODUCTS
CRAFTED IN THE USA
SINCE 1970

